



FCI DOG SHOWS
USER'S GUIDE



Brief code of conduct for exhibitors, judges and staff at a dog show



FCI DOG SHOWS USER'S GUIDE

* **Arrive to the showground with time enough** to pass any veterinary or access controls, avoiding crowds in the car park or at the entrance of the show, being able to **walk or exercise your dog** after the trip to adapts properly to the place.

**Judges, ring stewards and organization staff must always be punctual and be prepared to comply with the established schedules.*





FCI DOG SHOWS USER'S GUIDE

***Check** the location of the rings and the judging schedule, to be at the ring door with **time enough** and to avoid being declared “Absent”

*Try to always **leave free the accesses** to the showground and rings, helping all exhibitors to circulate without problems, not affecting the development of the show.

***The stewards, assistants, judges and organization staff are here to help you.**

Pay attention to their instructions as well as the information provided in writing or by public address system during the development of the event.

Brief code of conduct for exhibitors, judges and staff at a dog show

***A dog show is, above all, a celebration** of the purebred dog and everyone who participates in or visits it deserves to be treated **politely, with tolerance and respect.**

**Exhibitors deserve kind treatment from judges, stewards and staff, being aware that on many occasions their nerves are on edge.*





FCI DOG SHOWS USER'S GUIDE

***Appropriate clothing and grooming** are required of all those who participate in a dog show.

*The ring is a space **free of alcohol, tobacco and food** during the development of the show.

***Never leave your dog unattended,** nor let it disturb others with its barking, howling or growling.

**Any case of neglect or mistreatment of a dog cannot be tolerated and must be immediately brought to the attention of whoever is appropriate.*





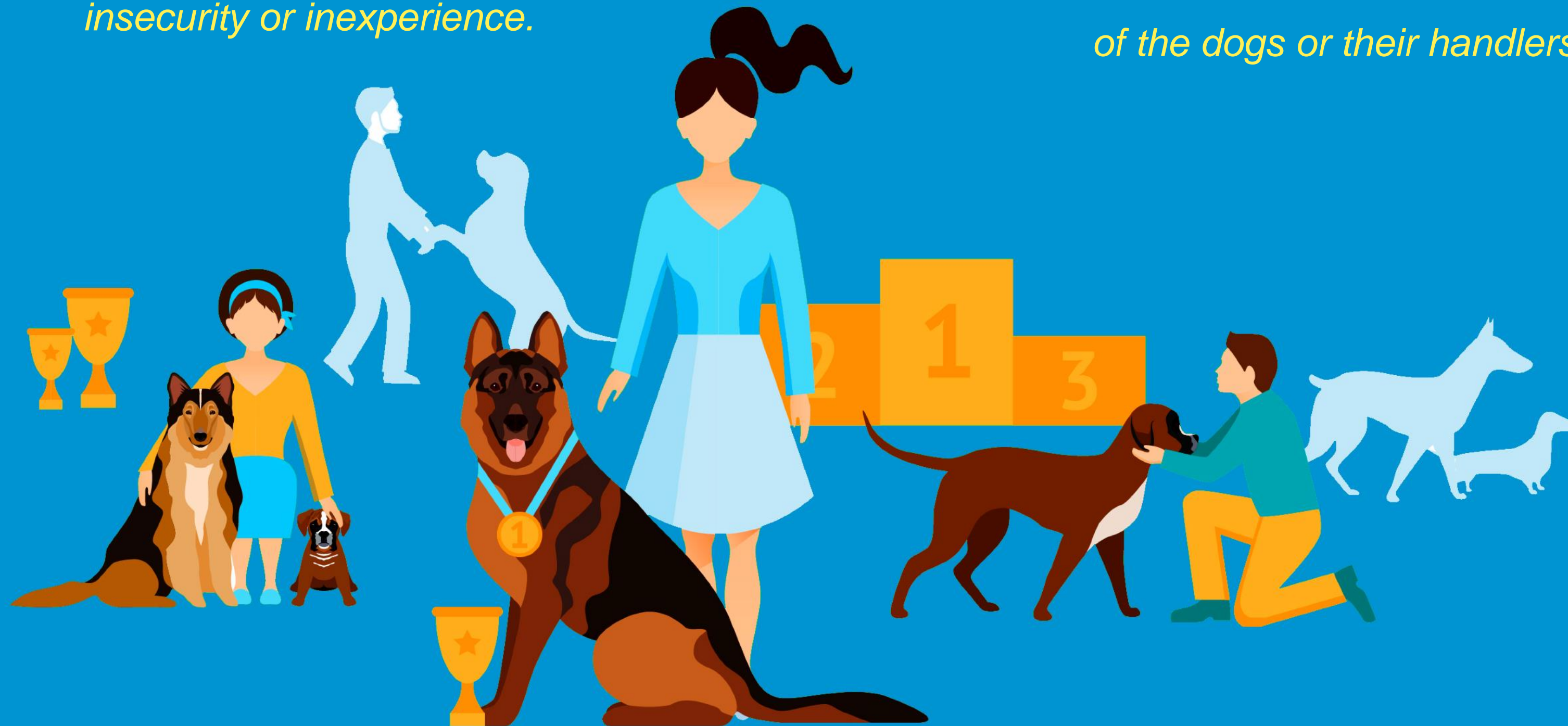
FCI DOG SHOWS USER'S GUIDE

*Inside the ring you must show **sportsmanship and fair play** with the others.

**It's very important to treat all exhibitors and their dogs equally, paying special attention to those that show insecurity or inexperience.*

*It's important to **avoid loud comments** about the appearance, movement or behavior of other participants or their dogs.

**No judge or ring staff should loudly criticize the appearance, behavior or movement of the dogs or their handlers.*





FCI DOG SHOWS USER'S GUIDE

*Talking and debating about the dogs participating in the show is fine, as long as it's done **politely**, **with constructive interest** and avoiding being hurtful or making malicious comments.

** If an exhibitor asks politely and the judge agrees, his questions can be answered or the decisions explained in more detail, always at the end and without interrupting the judging.*

*Ring staff are working and **should not be interrupted** with irrelevant conversations.

**Avoid starting conversations, answering calls or being absent from the ring without reason and interrupting the development of judging.*



***Sportsmanship** in the ring includes paying attention to our dog, without trying to attract or distract that of others.

**Treat all dogs equally, as if they were the only one present, regardless of their quality or preparation.*



FCI DOG SHOWS USER'S GUIDE

***Don't inappropriately criticize** the judge's decision or procedure, **nor openly show displeasure** or disagreement when you receive a qualification different from what was expected.

***Avoid showing open or obvious dislike** towards a dog or any of its characteristics, or towards the person showing it.



*It is important to **take care** of the spaces we use and **leave everything the same** or better than when we arrived, both at the exhibition site and in the hotel or accommodation where we are and in the city we visit.
This way we'll always be welcome.

***Always thank the exhibitors** for their participation and sportsmanship and the ring staff for their invaluable help in the development of the show.

